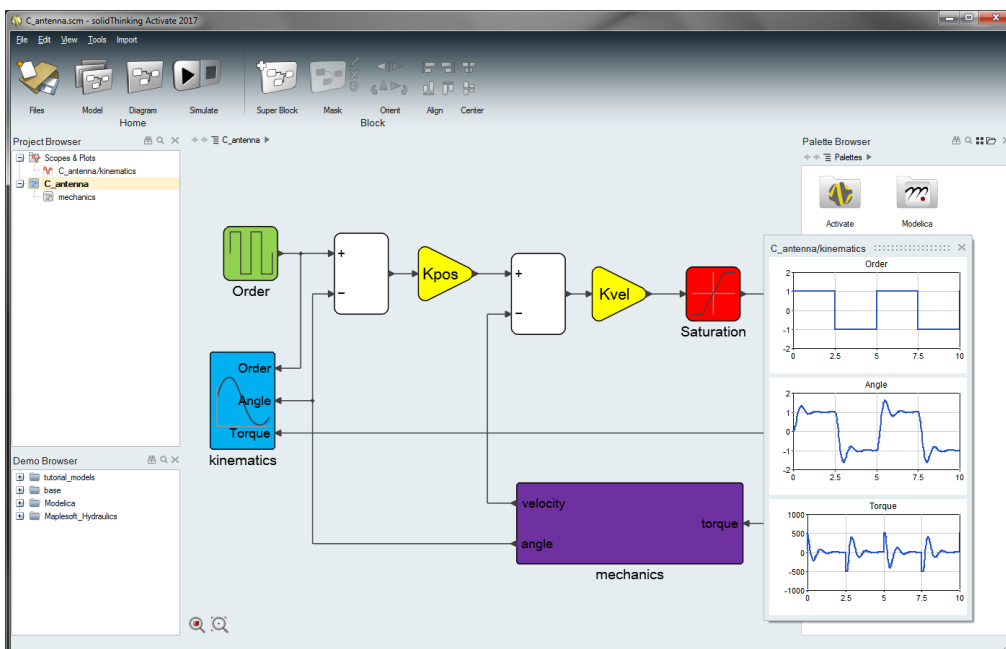


Activate 2017.3 Release Notes

INTRODUCTION

solidThinking Activate enables product creators, system simulation and control engineers to model, simulate and optimize multi-disciplinary systems. By leveraging model-based development, teams ensure that all design requirements are successfully met while also identifying system level problems early in the design process.



The release of **solidThinking Activate 2017.3** offers exciting features including:

- Powerful modeler and simulator for continuous and discrete models
- Robust handling of signal-based as well as physical models using a Modelica Engine powered by Maplesoft™ and a library of blocks based on the Modelica Standard Library.
- Comprehensive set of block libraries
- Support for Functional Mock-up Interface
- Co-simulation with Multi-Body Dynamics and Electromagnetics simulation software
- Library Management

PLATFORM SUPPORT

Platform		
OS	Version	Architecture
Windows	10/8.1/7	x86_64

The following features and enhancements have been added for **solidThinking Activate 2017.3**.

MODEL EDITING AND USER INTERFACE

Links	<ul style="list-style-type: none"> • Links routing is improved
Misc. Added Features	<ul style="list-style-type: none"> • Block count • Set font size on super blocks

MODELING AND SIMULATION

Modelica Support	<ul style="list-style-type: none"> • Support upgrade for Modelica Standard Library (MSL) version 3.2.2. • The Modelica Compiler is more compliant with MSL, and the handling of initial values is improved. • Import process for Modelica libraries is improved.
Engine updates	<ul style="list-style-type: none"> • Handling of initial events had been improved • FMI import process updates improve simulation speeds. • Input/output dependencies are leveraged to reduce delays with FMI import. • The FMU export process for Model Exchange accounts for discrete events, such as exporting a model that contains discrete events.
Code Generation	<ul style="list-style-type: none"> • The code generation mechanism has been enhanced to support asynchronous internal events.

BLOCKS AND LIBRARIES

From... Blocks	<ul style="list-style-type: none"> • Behavior before and after time span in <code>FromCSV</code>, <code>FromMatFile</code>, <code>FromTextFile</code>, <code>FromHDF</code>, <code>SignalGenerator</code> blocks is improved • Add the repeat option
New blocks	<ul style="list-style-type: none"> • Repeat • RandomPermutation • Accumulator • ImageDisplay • 3D lookup table

The following issues have been resolved for **solidThinking Activate 2017.3**:

Incorrect port number for block with multiple variable ports (of the same iotype)
Oblique links are created in some cases (for example on undo/redo or on block flip)
Application crashes when running an optimization model with Modelica block

Application crashes when a superblock is double-clicked after auto masking.
Activate freezes at times when simulating models with Modelica blocks (CSV logging issue)
Linearization with <code>vssLinearization</code> doesn't work correctly
Issue in the skeleton generator of <code>CCustomBlock</code> (when setting the number of zero-crossings to n)
Application crash when replacing blocks with multiple paste operations
"Virtual address" error encountered in MotionSolve co-simulation
Memory leak from MaxMin model
Application crashes when displaying the palette browser with <code>IncludeDiagram</code> block dialog open
Crash when Delete key is pressed while resizing a block
Issue with DAE solver on a Modelica model
FMU export for <code>ContStateSpace_Y</code> block is not correct
Crash on exit after import and uninstall of PlanarMechanics library
Uninstalling a library doesn't immediately remove the library from the palette browser
Super block port issue
Final time not save in SCM file if it is set to N
A link with an extra segment is created during undo/redo split creation
Issue with generating a super block when two splits are placed at the same location
Implicit link segment is deleted incorrectly when deleting a block
Behaviors before and after time span changes
Simulation result is incorrect when a super block containing Modelica blocks is turned on
Issue on resizing docked windows
Click Apply button should not display hidden parameter

CTRL+W shortcut should not appear in the Project Browser's context menu of a model

Routing issue when enabled/disable the support port of DC_PermanentMagnet block

After a copy-paste operation of a port block inside of a super block, the undo operation in the parent diagram creates a non-orthogonal link

The model-edition date and version number should be automatically updated when a model is saved.