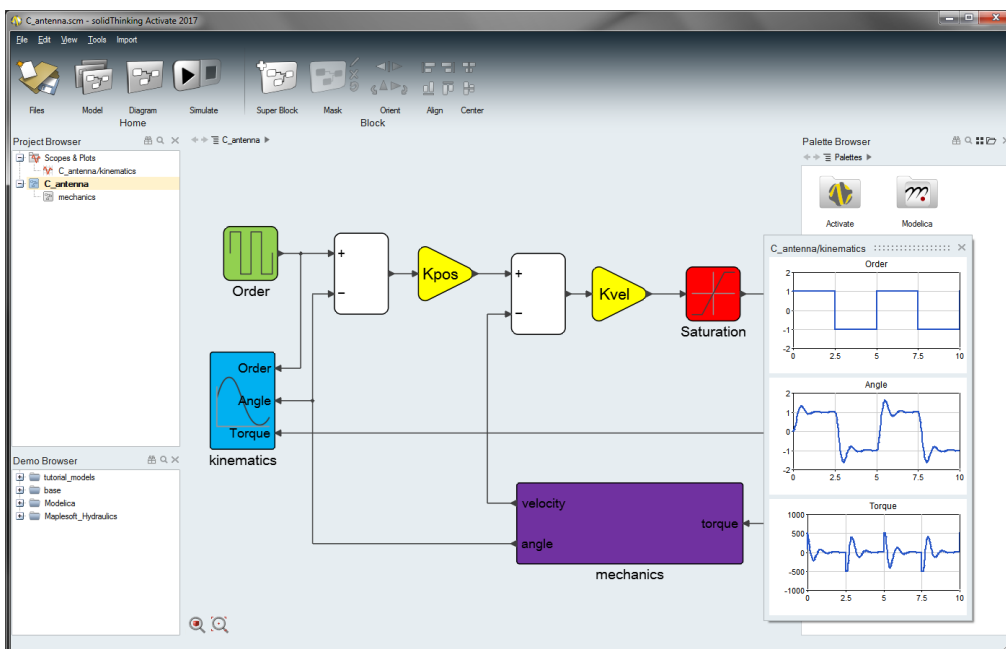


## Activate 2017.1 Release Notes

### INTRODUCTION

**solidThinking Activate** enables product creators, system simulation and control engineers to model, simulate and optimize multi-disciplinary systems. By leveraging model based development, ensure that all design requirements are successfully met while also identifying system level problems early in the design process.



The release of **solidThinking Activate 2017.1** offers exciting features including:

- Powerful modeler and simulator for continuous and discrete models
- Robust handling of signal-based as well as physical models using a Modelica Engine powered by Maplesoft™ and a library of blocks based on the Modelica Standard Library.
- Comprehensive set of block libraries
- Support for Functional Mock-up Interface
- Co-simulation with Multi-Body Dynamics
- Library Management

### PLATFORM SUPPORT

Platform		
OS	Version	Architecture
Windows	10/8.1/7	x86_64

The following features and enhancements have been added for **solidThinking Activate 2017.1**.

**MODEL EDITING AND USER INTERFACE**

<b>FMU Block</b>	<ul style="list-style-type: none"> <li>• Access to all information (creator, causality,...) from an FMU is now available in the FMU block dialog.</li> <li>• Units (as available in the FMU) are displayed in the block dialog.</li> </ul>
<b>Model Report</b>	<ul style="list-style-type: none"> <li>• Improved Model Report layout.</li> </ul>
<b>Translation</b>	<ul style="list-style-type: none"> <li>• Updated Japanese translation of User Interface.</li> </ul>
<b>Model folder</b>	<ul style="list-style-type: none"> <li>• Direct-access to model directories from the Project Browser.</li> </ul>

**MODELING AND SIMULATION**

<b>Co-Simulation with VI-CarRealTime</b>	<ul style="list-style-type: none"> <li>• New block added to perform Cosimulation with VI-Grade's VI-CarRealTime is added. This requires to use VI-CarRealTime version 18.</li> </ul>
<b>Co-Simulation with Altair MotionSolve</b>	<ul style="list-style-type: none"> <li>• Support added for multiple MSPLANT blocks inside a model.</li> </ul>
<b>Embed Import</b>	<ul style="list-style-type: none"> <li>• On the menu bar, the new Import &gt; Embed utility is accessible to import solidThinking Embed models.</li> </ul>

**BLOCKS AND LIBRARIES**

<b>Modelica Custom Component</b>	<ul style="list-style-type: none"> <li>• New Modelica Custom Component block added for creating or customizing Modelica components with Modelica language.</li> </ul>
<b>Modelica Blocks</b>	<ul style="list-style-type: none"> <li>• The MO code for each Modelica MSL block can be accessed from the block help page.</li> </ul>
<b>Block Enhancements</b>	<ul style="list-style-type: none"> <li>• rem function is added to the MathExpressions block.</li> <li>• Always-Active setting added for zero-crossing blocks.</li> <li>• More digits can be displayed in the value fields in the FMU block.</li> <li>• Enhanced display of buttons (images) in block dialogs</li> </ul>

The following issues have been resolved for **solidThinking Activate 2017.1**:

Issue when saving edited models when closing the application
ShiftRegister block issue with the Type parameters

Learn more at [solidThinking.com/Activate](http://solidThinking.com/Activate) | 2 |

Pause/stop Cosimulation with multiple MSPlant should close all network license checkouts
Issue where generated report keeps loading and refreshing in some cases
Floating link results when deleting a port in a superblock and during the undo operation in parent diagram
User cannot abort closing Activate by clicking the cancel button
Application crashes after switching views during simulation, when closed
Clear the files on disk from Recovery dialog
Non-orthogonal implicit link is created after undo redo steps
Annotation texts are not displayed clearly in model report
Simulation error when block name starts with a number
Non-ascii characters are not displayed correctly in hml editor title bar
If the Save operation is performed on a read-only model, the Save As option dialog should open.